



Recruitment pack

2025



Bowel Cancer UK
Beating bowel cancer together



“ A year after my bowel cancer diagnosis, I shared my story with Bowel Cancer UK. Since then, I’ve had some fantastic opportunities to raise awareness of the disease and talk about my journey in the press, and on the charity’s website and social media channels. I’ve been really grateful for these opportunities and hope that they will help give hope to others in a similar situation to myself. ”

Mohammad

Welcome from our Chief Executive, Genevieve Edwards

I'm delighted you're interested in joining our team at Bowel Cancer UK.

Our task is urgent. Every 30 minutes someone dies from bowel cancer, making it the UK's second biggest cancer killer. But it shouldn't be this way, because bowel cancer is a treatable and curable disease, especially if diagnosed early.

Bowel cancer is also the fourth most common cancer in the UK – nearly 43,000 people are diagnosed each year. It can affect anyone, but it's most common in those over 50. The scale of our task cannot be underestimated.

Bowel Cancer UK is the UK's leading bowel cancer charity. We're determined to save lives, improve the quality of life for everyone diagnosed with the disease, and support all those affected by bowel cancer in the UK. Our vision is a future where nobody dies of the disease.

Thanks to the generosity of our community, we're in a privileged position to be able to grow our staff team to deliver our ambitious new strategy, which we launched in 2023.

There are huge challenges facing bowel cancer patients across the UK, and our community needs us now more than ever. We're building a team of enthusiastic, dedicated people who can help us achieve our goal - a future where nobody dies of bowel cancer.



Genevieve Edwards, Chief Executive

You'll join an organisation with a vibrant, dynamic and 'can-do' culture. You'll help the charity operate to the highest standards, raise more money, invest in research and support services, influence national policy and make a meaningful and impactful contribution to the lives of those affected by bowel cancer.

If this sounds like the challenge for you, we'd love to hear from you.

If you'd like an informal discussion about working with us, please contact jobs@bowelcanceruk.org.uk

Thank you for your interest.

Why work with us?

At Bowel Cancer UK our work is productive and rewarding. We strive to meet the standards of a good employer within the charity sector and to do what we can to achieve balance in our working lives. We're committed to quality and the attainment of professional standards of excellence in every area of our work.

You can expect a well-structured and focused working environment with clarity about performance expectations and work standards in line with our competency framework. We want everyone to know how they can contribute to achieving our goals and feel part of a supportive team with high ambitions. You'll have regular meetings with your line manager, an annual appraisal, and a personal development plan.

Flexible working

You'll have the flexibility you need to achieve a good work-life balance. You can work at home, in our Hub in London, or a mixture of both and can also request flexible working hours. Everyone is provided with a laptop to ensure they can fully access our IT systems from home, or on the go.

We also provide a discounted TechScheme where employees can spread the cost of discounted tech with manageable monthly instalments deducted from your payslips.

Financial benefits

We operate a Group Personal Pension Scheme through Scottish Widows and provide a contribution of 5% of salary while you contribute 4%. From your first day of employment, you'll benefit from a life assurance scheme offering four times your salary in case of death in service. You'll also have access to an annual season ticket loan or, if you prefer to travel on two wheels, a cycle to work loan scheme.

Leave entitlements

You'll have 27 days annual leave (pro rata) plus eight bank holidays. We also close for three days over Christmas and these days are given in addition to the leave entitlement. A range of paid family leave, study leave and compassionate leave are available to all our people. Sometimes you may need to carry out extra work outside normal working hours – for example to cover evening meetings or a weekend event. In these situations, we offer time off in lieu (TOIL) to compensate for the extra time worked.

Wellbeing benefits

We offer a wide range of holistic strategies to support our employees, including an Employee Assistance Programme for you and your immediate family to have access to an independent confidential 24 hour helpline and counselling service to support you with health, work, home or legal issues you may face. We also have trained Mental Health First Aiders, Menopause Champions and Endometriosis champions who are available to provide further support and signposting as required. If you're a display screen user, we'll pay for an annual eye test and if you need glasses or contact lenses to help you with your role, we'll fund the cost of standard frames and lenses.

We're looking to increase the diversity within our team and welcome applications from anyone who has the skills and qualities outlined in the job description or who believes they have the ability to learn them fast. What's important isn't your level of education or the opportunities which you've had, it's about you and how you seize the prospects ahead of you.

About Bowel Cancer UK

Our history dates back to 1987, when Patrick Dolan set up The Britta Dolan Memorial Cancer Fund, after his wife, Britta Dolan, died from bowel cancer. We became known as Bowel Cancer UK in 2005 when we merged with another charity and today, we're the UK's leading bowel cancer charity.

Our vision

A future where nobody dies of bowel cancer.

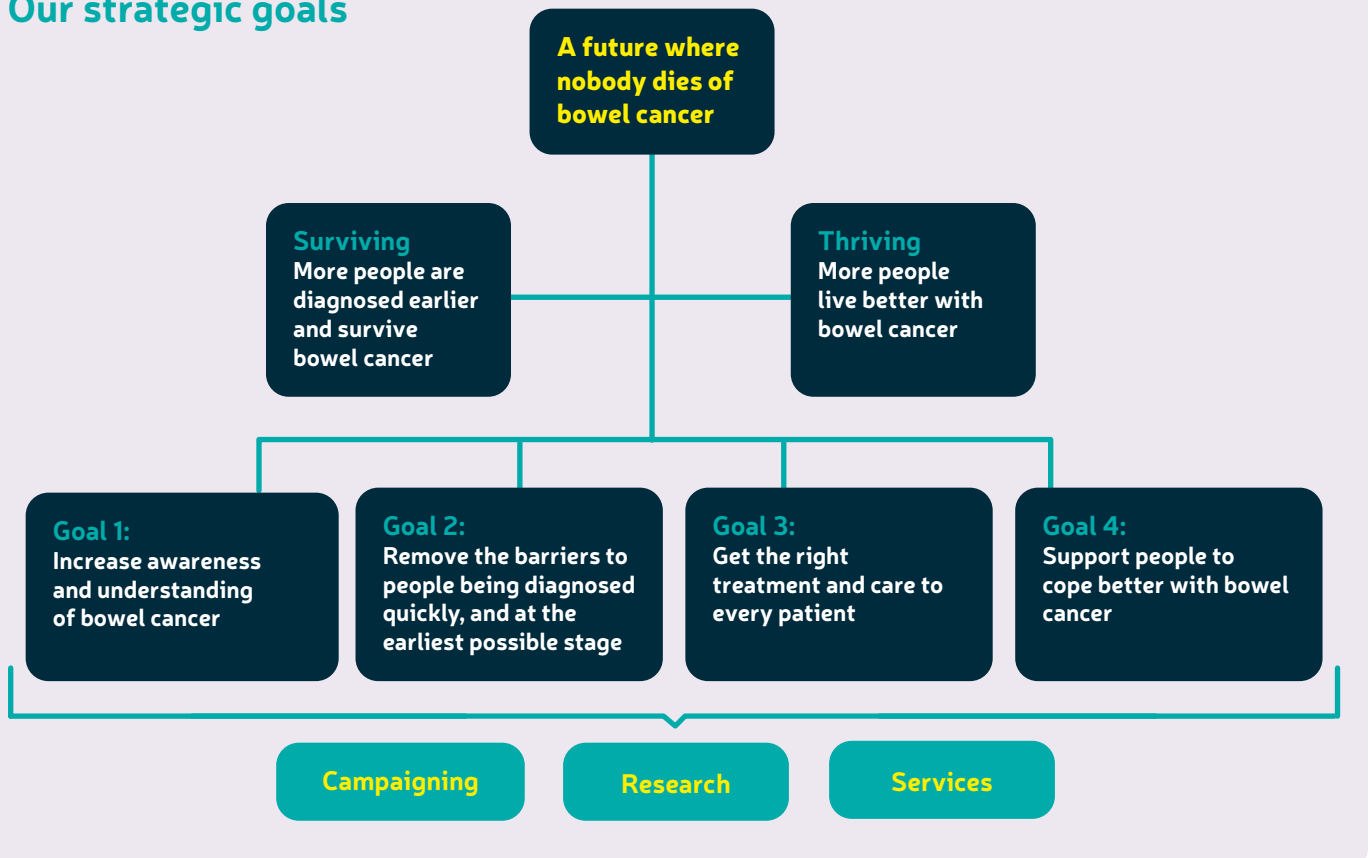
Our mission

We're determined to save lives and improve the quality of life of everyone affected by bowel cancer. We support and fund targeted research, provide expert information and support to patients and their families, educate the public and professionals about the disease, and campaign for early diagnosis and access to the best treatment and care.

Our values

Our values are caring, ambitious, supportive, expert and open. This means we always strive to be patient and family focussed, compassionate and human, evidence-based, ambitious and determined, and welcoming and inclusive.

Our strategic goals



2023 in numbers



We provided over **five million** moments of support to people affected by bowel cancer



More than **230,000** people used our forum, viewing pages over **3 million** times between them



89% of bowel cancer patients using our services **feel better supported** as a result



More than **100 volunteers** delivered **130** volunteering roles and gave over **5,000** hours of their time



We sent out over **177,000** health information booklets to patients and healthcare professionals, an **increase of 50% on 2022**, driven mainly by increased engagement with health professionals



We ran education events attended by more than **800 healthcare professionals**



94% of colorectal nurses accessing our education programme intend to use their learning in their clinical practice



We funded new research grants totalling more than **£122,000**



Donations of money, goods and services exceeded **£7 million** for the first time in our history

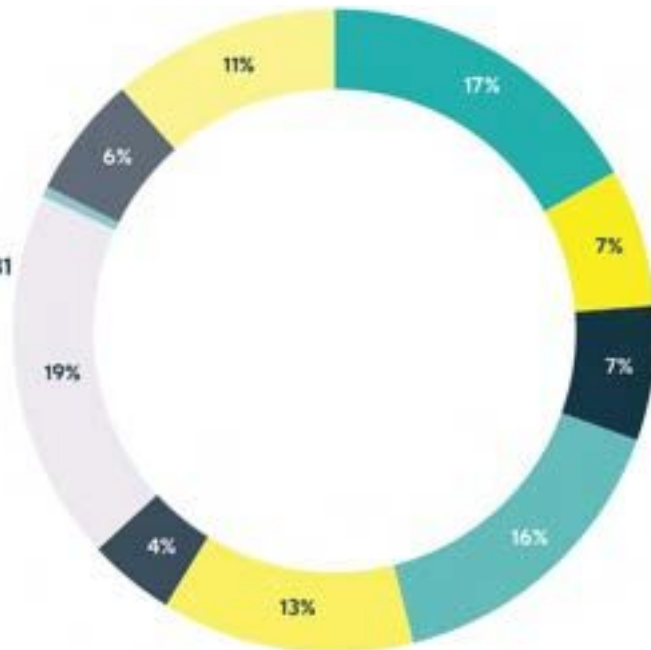


We marked one year since the launch of our **#GetOnARoll** campaign, bringing ten partners together to put vital information about bowel cancer symptoms in households across the UK, and **winning two awards**

Financial summary 2023

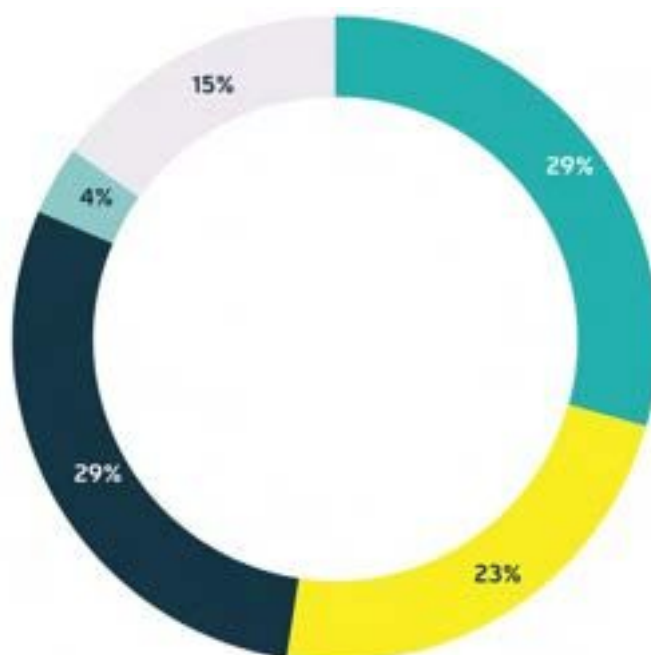
Where our money comes from

- Individuals £1,186,805
- Legacies £490,949
- Nations £478,713
- Philanthropy & Partnerships £1,098,531
- Runs £899,114
- Treks & Challenges £309,064
- Community £1,322,251
- Trading £37,719
- Gifts in Kind £432,589
- Other £811,272



How we spend our money

- Generating Voluntary Income £1,783,234
- Direct Services £1,401,939
- Awareness, Policy and Influencing £1,763,515
- Research £212,457
- Support costs £915,171





“

I fundraised for Bowel Cancer UK in memory of my sister Sharan, who passed away from bowel cancer, in order to keep her memory alive and to raise awareness of the disease. I chose to support this charity so that they can continue the incredible work they do, as I don't want anyone to have to experience what my sister or my family have been through.

”

Manisha, pictured with her sister Sharan



Bowel Cancer^{UK}
Beating bowel cancer together

Bowel Cancer UK is the UK's leading bowel cancer charity. We're determined to save lives and improve the quality of life of everyone affected by the disease.

We support and fund targeted research, provide expert information and support to patients and their families, educate the public and professionals about bowel cancer and campaign for early diagnosis and access to best treatment and care.

To donate or find out more visit
[bowelcanceruk.org.uk](https://www.bowelcanceruk.org.uk)

 /bowelcanceruk

  @bowelcanceruk